

PRODUCT CATALOGUE

Date : 01/01/2026



CPVC | UPVC | SWR | PTMT | FRP Manhole Cover

PIPES & FITTINGS

AN ISO 9001:2015 COMPANY

INTRODUCTION

cPVC ISI PLUMBING SYSTEM

Technical Specification (CPVC PIPE AS PER IS : 15778)

Nominal Bore	Nominal Size	Nominal Outside Diameter	SDR - 11 Wall Thickness		Maximum (mm)	Working Pressure at		SDR - 13.5 Wall Thickness		Maximum (mm)	Working Pressure at		
			Min.	Max.		Weight	20°C (Cold)	90°C (Hot)	Min.		Max.	Weight	20°C (Cold)
(inch)	(mm)	(mm)	(mm)	(mm)	3 MTR (Kg.)	Kg/Cm ²		(mm)	(mm)	3 MTR (Kg.)	Kg/Cm ²		
1/2	15	15.90	2.10	2.25	0.400	28.10	7.00	1.70	1.85	0.350	21.80	5.50	
3/4	20	22.30	2.20	2.35	0.610	28.10	7.00	1.70	1.85	0.520	21.80	5.50	
1	25	28.65	2.60	2.75	0.980	28.10	7.00	1.95	2.10	0.820	21.80	5.50	
1.1/4	32	34.90	3.10	3.30	1.470	28.10	7.00	2.65	2.85	1.200	21.80	5.50	
1.1/2	40	41.35	4.00	4.20	2.050	28.10	7.00	3.05	3.25	1.700	21.80	5.50	
2	50	54.00	4.85	5.05	3.500	28.10	7.00	4.15	4.35	2.900	21.80	5.50	
(inch)	(MM)	cPVC Pipes SCH - 80						cPVC Pipes SCH - 40					
2.1/2	65	73.30	8.00	8.25	7.000	28.10	7.00	5.25	5.50	5.100	21.80	5.50	
3	80	89.00	8.15	8.40	9.300	28.10	7.00	5.70	5.95	6.600	21.80	5.50	
4	100	114.40	8.30	8.55	13.600	28.10	7.00	5.90	6.15	9.500	21.80	5.50	

ASTM uPVC PLUMBING SYSTEM

Technical Specification

Nominal Bore	Nominal Size	Outside Diameter	SCH - 40				SCH - 40			
			Wall Thickness		Working Pressure	Weight	Wall Thickness		Working Pressure	Weight
(inch)	(mm)	(mm)	Minimum (mm)	Maximum (mm)	Kg/Cm ²	Kg.	Minimum (mm)	Maximum (mm)	Kg/Cm ²	Kg.
1/2	15	21.35	2.30	2.45	41.40	0.770	3.00	3.20	58.60	0.920
3/4	20	26.70	2.40	2.55	33.10	0.980	3.25	3.45	47.60	1.280
1	25	33.35	3.00	3.15	31.00	1.490	3.55	3.75	43.40	1.790
1.1/4	32	42.20	2.95	3.15	25.50	2.000	3.80	4.10	35.90	2.550
1.1/2	40	48.30	3.15	3.35	22.80	2.410	4.10	4.40	32.40	3.060
2	50	60.25	3.25	3.45	19.30	3.070	4.35	4.65	27.60	4.070
2.1/2	65	73.20	4.15	4.40	21.10	4.880	5.80	6.15	29.54	6.780
3	80	89.10	4.35	4.60	18.28	6.290	6.10	6.45	26.02	8.590
4	100	114.50	5.05	5.30	15.47	9.200	7.20	7.55	22.50	12.800

SWR RING TYPE & PASTING TYPE

Technical Specification (SWR RING - FIT PIPE AS PER IS : 13592)

Pipe Size (mm)	Socket Length	Mean Outside Diameter (mm)		Wall Thickness				Fitting Size (mm)	Wall Thickness at Plain End (mm) Min.	Wall Thickness at Socket (mm) Maxi. e2	Wall Thickness at Socket (mm) Min. e3	Max. Length of Beading & Neck A	Min. Neck Length of Socket B	Min. Length of Beading B	Inside Diameter of Socket at Midpoint (mm)		Outside Diameter of Spigot Portion (mm)	
				Type "A"		Weight									Min.	Maxi.	Min.	Maxi.
		Min.	Maxi.	Min.	Maxi.	10 Feet	20 Feet											
40	26.00	40.00	40.30	1.60	1.80	0.850	1.700								Min.	Maxi.	Min.	Maxi.
50	30.00	50.00	50.30	1.70	1.90	1.250	2.500	75	3.20	2.90	2.40	20	5	25	75.10	76.20	75.00	75.30
63	36.00	63.00	63.30	1.70	1.90	1.400	2.800	90	3.20	2.90	2.40	23	5	28	90.10	91.20	90.00	90.30
75	40.00	75.00	75.30	1.70	1.95	1.950	3.900	110	3.20	2.90	2.40	26	6	32	110.10	111.30	110.00	110.40
90	46.00	90.00	90.30	1.80	2.05	2.500	5.000	160	3.50	2.90	2.40	29	6	32	160.10	160.30	160.00	160.40
110	48.00	110.00	110.40	1.90	2.15	3.450	6.900											
160	58.00	160.00	160.50	2.75	3.05	7.200	14.400											

PVC PIPING SYSTEM

Technical Specification

Nominal Outside Diameter Socket Length Nominal Size	Socket Length	Mean Outside Diameter		Wall Thickness											
				2.5 Kg/Cm ²			Class 2/0.40 Mpa/4.0 Kg/Cm ²			Class 3/0.60 Mpa/6.0 Kg/Cm ²			Class 5/1.00 Mpa/10.0 Kg/Cm ²		
		Min.	Max.	Min.	Max.	Weight	Min.	Max.	Weight	Min.	Max.	Weight	Min.	Max.	Weight
20	16.00	20.00	20.00	-	-	-	-	-	-	-	-	-	1.45	1.65	0.650 (40 PCS)
25	19.00	25.00	25.30	-	-	-	-	-	-	-	-	-	1.65	1.85	1.000 (30 PCS)
32	22.00	32.00	32.30	-	-	-	-	-	-	-	-	-	1.80	2.00	1.600 (20 PCS)
40	26.00	40.00	40.30	-	-	-	-	-	-	1.55	1.70	1.700	-	-	-
50	31.00	50.00	50.30	-	-	-	-	-	-	1.65	1.80	2.500	-	-	-
63	38.00	63.00	63.30	-	-	-	1.45	1.65	2.800	1.70	1.90	3.850	-	-	-
75	44.00	75.00	75.30	1.40	1.60	3.000	1.50	1.70	3.850	2.50	2.75	5.400	-	-	-
90	51.00	90.00	90.30	1.40	1.60	3.900	1.75	2.00	5.350	2.65	2.95	7.750	-	-	-
110	61.00	110.00	110.40	1.70	1.90	5.600	2.20	2.45	7.850	3.20	3.50	11.200	-	-	-
140	76.00	140.00	140.50	1.95	2.15	8.600	2.85	3.15	12.750	3.90	4.25	17.700	-	-	-
160	86.00	160.00	160.50	2.25	2.50	10.800	3.45	3.75	16.800	4.85	5.20	23.400	-	-	-
180	96.00	180.00	180.60	2.45	2.70	13.500	3.80	4.10	20.500	5.30	5.65	29.500	-	-	-
200	106.00	200.00	200.60	2.70	3.00	17.000	4.00	4.30	25.800	6.80	7.20	38.100	-	-	-

Field of Applications

PVPO. DOES NOT FAVOR DERLAGRATION THUS IT IS IDEALLY USED FOR HOUSING, INDUSTRIAL, COMMERCIAL & PUBLIC SECTOR DEVELOPMENTS. OUR PLUMBING SOLUTIONS ARE HAVING VARIED PROPERTIES LIKE LEAD FREE, COST EFFECTIVE, EASY INSTALLATION NO CORROSION, LEAKAGE PROOF, UV & FIRE RESISTANT CPVC PIPES. DRAINAGE PIPING BOLUTION HAVE SMOOTH INTERIOR SO THERE IS NO INCRUSTATIONS.



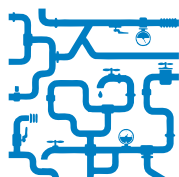
**Cold & Hot Water Plumbing
for Buildings**



**Industrial Application for Extrusion.
Plating & Tanning Plants**



Swimming Pools



Water Treatment Plants



**Drainage System
for Households**

Product Features



HIGH STRENGTH
& DURABILITY



IDEAL FOR
DRINKING WATER



ULTRA VOILET
RESISTANT



INDUSTRIAL &
RESIDENTIAL USAGE



HOT & COLD
WATER PLUMBING



MAINTENANCE
FREE



ANTI-BACTERIAL



ANTI-FUNGAL

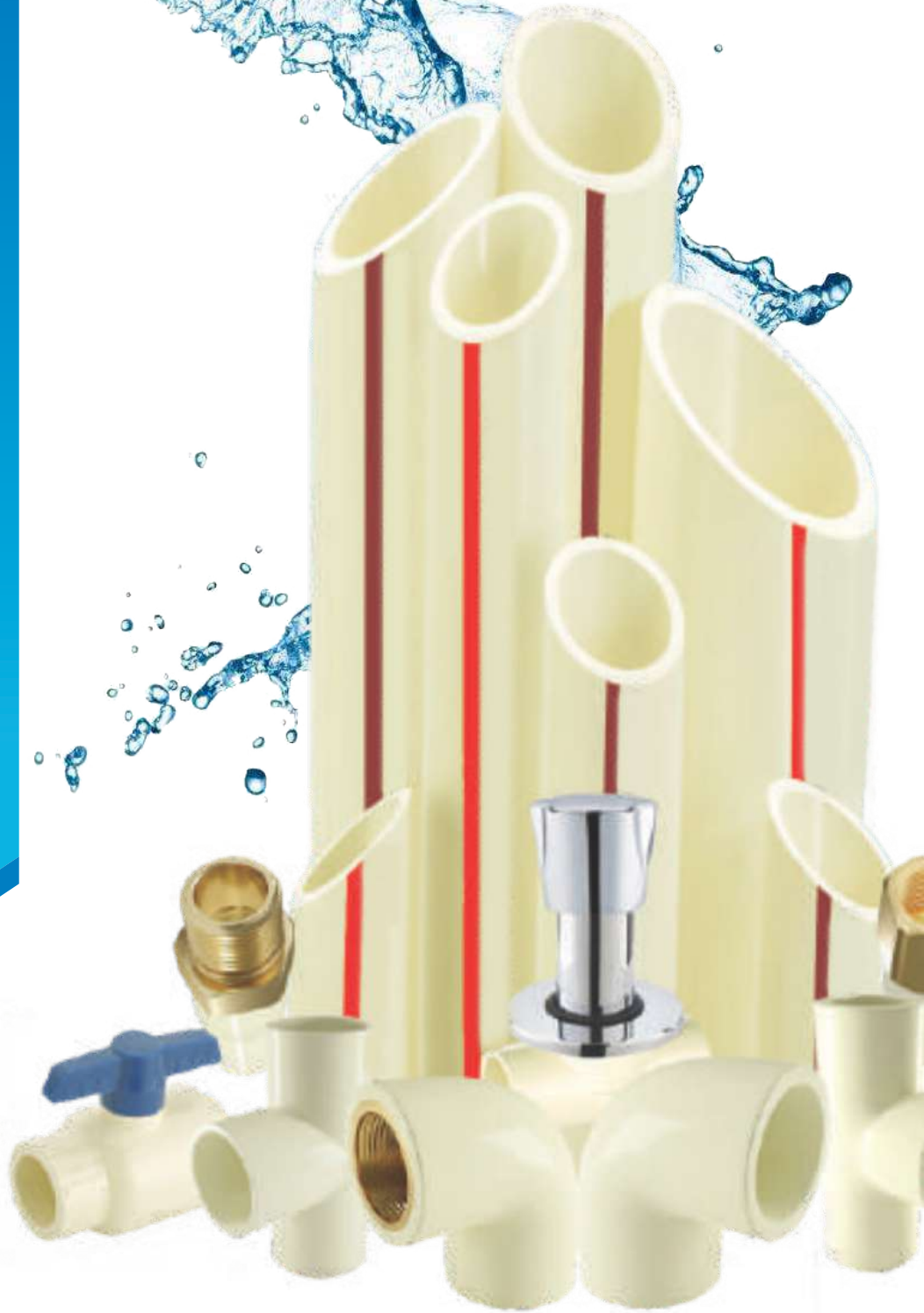


ANTI-ALGAE



ANTI-VIRAL
(INFLUENZA H1N1, SARS-COV-2)

PYPPO®



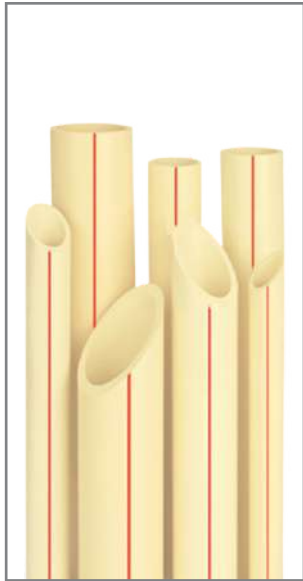
cPVC

PIPES & FITTINGS

For **HOT** & **COLD** Water

cPVC Plumbing Pipes & Fittings

Mfg of : cPVC Fitting (1/2" to 2") ASTM D-2846 SDR-11 & (2.1/2" to 4") SCH-40 ASTM-F-438 SCH-80 ASTM-F-439
 cPVC Pipes 1/2" to 2" ASTM D-2846 SDR-11 / SDR-13.5 (2.1/2" to 4") ASTM-F-441



PYPO cPVC PIPES (SDR-11 CLASS-1)				
SIZE (IN)	SIZE (MM)	3-MTR PACK	5-MTR PACK	RATE PER MTR
1/2"	15	50	50	67
3/4"	20	50	50	93
1"	25	30	30	149
1.1/4"	32	20	15	243
1.1/2"	40	15	15	340
2"	50	10	8	592

PYPO cPVC PIPES (SDR-13.5 CLASS-2)				
SIZE (IN)	SIZE (MM)	3-MTR PACK	5-MTR PACK	RATE PER MTR
1/2"	15	50	50	59
3/4"	20	50	50	79
1"	25	30	30	126
1.1/4"	32	20	15	203
1.1/2"	40	15	15	288
2"	50	10	8	489

PYPO cPVC PIPES (SCH-40)				
SIZE (IN)	SIZE (MM)	3-MTR PACK	5-MTR PACK	RATE PER MTR
2.1/2"	65	5	5	869
3"	80	4	4	1113
4"	100	2	2	1602

PYPO cPVC PIPES (SCH-80)				
SIZE (IN)	SIZE (MM)	3-MTR PACK	5-MTR PACK	RATE PER MTR
2.1/2"	65	5	5	1184
3"	80	4	4	1574
4"	100	2	2	2295



ELBOW 90° (SDR-11)				
SIZE		PACKING		RATE
INCH	MM	BAG	CARTOON	
1/2"	15	60x8	480	9
3/4"	20	80x6	480	12.5
1"	25	55x4	220	19.5
1.1/4"	32	15x8	120	58
1.1/2"	40	10x8	80	97
2"	50	11x3	33	218

ELBOW 90° (SDR-40)				
SIZE		PACKING		RATE
INCH	MM	BAG	CARTOON	
2.1/2"	65	4x5	20	327
3"	80	4x3	12	533
4"	100	-	14	976



TEE (SDR-11)				
SIZE		PACKING		RATE
INCH	MM	BAG	CARTOON	
1/2"	15	50x6	300	12
3/4"	20	50x6	300	16
1"	25	35x4	140	27
1.1/4"	32	11x8	88	78
1.1/2"	40	7x8	56	126
2"	50	6x4	24	284

TEE (SDR-40)				
SIZE		PACKING		RATE
INCH	MM	BAG	CARTOON	
2.1/2"	65	4x3	12	451
3"	80	3x3	9	664
4"	100	-	10	1270



M.T.A. THREAD (SDR-11)				
SIZE		PACKING		RATE
INCH	MM	BAG	CARTOON	
1/2"	15	100x6	600	10
3/4"	20	45x6	270	12
1"	25	45x8	360	23
1.1/4"	32	33x6	198	43
1.1/2"	40	16x8	128	64
2"	50	9x8	72	130
3/4"x1/2"	20x15	45x6	270	13

M.T.A. THREAD (SDR-80)				
SIZE		PACKING		RATE
INCH	MM	BAG	CARTOON	
2.1/2"	65	-	22	264
3"	80	-	16	442
4"	100	-	08	710



F.T.A. THREAD (SDR-11)				
SIZE		PACKING		RATE
INCH	MM	BAG	CARTOON	
1/2"	15	75x6	450	11
3/4"	20	30x8	250	19
1"	25	38x8	304	30
1.1/4"	32	21x8	168	49
1.1/2"	40	15x8	120	73
2"	50	15x4	60	137
3/4"x1/2"	20x15	40x6	240	18

F.T.A. THREAD (SDR-80)				
SIZE		PACKING		RATE
INCH	MM	BAG	CARTOON	
2.1/2"	65	-	22	269
3"	80	-	24	430
4"	100	-	14	795

cPVC Plumbing Pipes & Fittings

Mfg of : cPVC Fitting (1/2" to 2") ASTM D-2846 SDR-11 & (2.1/2" to 4") SCH-40 ASTM-F-438 SCH-80 ASTM-F-439
 cPVC Pipes 1/2" to 2" ASTM D-2846 SDR-11 / SDR-13.5 (2.1/2" to 4") ASTM-F-441



ELBOW 45° (SDR-11)				
SIZE		PACKING		RATE
INCH	MM	BAG	CARTOON	
1/2"	15	45x12	540	14
3/4"	20	35x6	210	19
1"	25	15x8	120	34
1.1/4"	32	9x8	72	53
1.1/2"	40	11x4	44	92
2"	50	5x4	20	183

ELBOW 45° (SCH-40)				
SIZE		PACKING		RATE
INCH	MM	BAG	CARTOON	
2.1/2"	65	4x6	24	282
3"	80	5x3	15	406
4"	100	-	16	753



SOCKET TANK NIPPLE (SDR-11)				
SIZE		PACKING		RATE
INCH	MM	BAG	CARTOON	
1/2"	15	-	-	-
3/4"	20	30x8	240	47
1"	25	37x4	148	66
1.1/4"	32	11x8	88	124
1.1/2"	40	8x8	64	151
2"	50	5x8	40	222

SOCKET TANK NIPPLE (SCH-40)				
SIZE		PACKING		RATE
INCH	MM	BAG	CARTOON	
2.1/2"	65	-	9	393
3"	80	-	9	575
4"	100	-	6	797



COUPLER (SDR-11)				
SIZE		PACKING		RATE
INCH	MM	BAG	CARTOON	
1/2"	15	75x10	720	6
3/4"	20	80x4	320	9
1"	25	75x4	300	17
1.1/4"	32	25x8	200	34
1.1/2"	40	15x8	120	60
2"	50	10x6	60	127

COUPLER (SCH-80)				
SIZE		PACKING		RATE
INCH	MM	BAG	CARTOON	
2.1/2"	65	9x4	36	218
3"	80	9x3	27	310
4"	100	-	10	590



END CAP (SDR-11)				
SIZE		PACKING		RATE
INCH	MM	BAG	CARTOON	
1/2"	15	50x10	500	7
3/4"	20	65x8	520	9
1"	25	35x8	280	15
1.1/4"	32	20x8	160	26
1.1/2"	40	25x8	200	43
2"	50	13x8	104	88

END CAP (SCH-80)				
SIZE		PACKING		RATE
INCH	MM	BAG	CARTOON	
2.1/2"	65	12x2	24	173
3"	80	14x3	42	253
4"	100	-	10	515



UNION (SDR-11)				
SIZE		PACKING		RATE
INCH	MM	BAG	CARTOON	
1/2"	15	25x8	200	43
3/4"	20	30x4	120	45
1"	25	37x4	148	71
1.1/4"	32	11x8	88	115
1.1/2"	40	9x8	72	160
2"	50	5x6	30	372

UNION (SCH-80)				
SIZE		PACKING		RATE
INCH	MM	BAG	CARTOON	
2.1/2"	65	-	24	646
3"	80	-	12	902
4"	100	-	04	1070



REDUCER TEE (SDR-11)				
SIZE		PACKING		RATE
INCH	MM	BAG	CARTOON	
3/4"x1/2"	20x15	25x6	150	21
1"x3/4"	25x20	25x8	200	37
1.1/4"x3/4"	32x20	13x8	104	63
1.1/4"x1"	32x25	13x8	104	69
1.1/2"x3/4"	40x20	9x8	72	103
1.1/2"x1"	40x25	8x8	64	108
1.1/2"x1.1/4"	40x32	10x6	60	112
2"x3/4"	50x20	2x8	16	220
2"x1"	50x25	2x8	16	193
2"x1.1/4"	50x32	2x8	16	224
2"x1.1/2"	50x40	2x8	16	233
-	-	-	-	-

cPVC Plumbing Pipes & Fittings

Mfg of : cPVC Fitting (1/2" to 2") ASTM D-2846 SDR-11 & (2.1/2" to 4") SCH-40 ASTM-F-438 SCH-80 ASTM-F-439
 cPVC Pipes 1/2" to 2" ASTM D-2846 SDR-11 / SDR-13.5 (2.1/2" to 4") ASTM-F-441



BRASS ELBOW (SDR-11)				
SIZE		PACKING		RATE
INCH	MM	BAG	CARTOON	
1/2"	15	40x6	240	59
3/4"	20	15x8	120	100
1"	25	12x6	72	145
1.1/4"	32	6x8	48	225
3/4"x1/2"	20x15	20x8	160	61
1"x1/2"	25x15	16x6	96	72
1"x3/4"	25x20	10x8	80	115
1.1/4"x1/2"	32x15	8x8	64	135
1.1/4"x3/4"	32x20	8x8	64	160
1.1/2"x1/2"	40x15	7x6	42	162
1.1/2"x3/4"	40x20	6x6	36	215
2"x1/2"	50x15	3x8	24	265
2"x3/4"	50x20	3x8	24	310



BRASS TEE (SDR-11)				
SIZE		PACKING		RATE
INCH	MM	BAG	CARTOON	
1/2"	15	30x6	180	70
3/4"	20	15x6	90	108
1"	25	9x6	54	160
1.1/4"	32	4x8	32	255
3/4"x1/2"	20x15	14x8	112	75
1"x1/2"	25x15	8x8	64	90
1"x3/4"	25x20	11x6	66	135
1.1/4"x1/2"	32x15	6x8	48	140
1.1/4"x3/4"	32x20	5x8	40	178
1.1/2"x1/2"	40x15	3x10	30	180
1.1/2"x3/4"	40x20	3x10	30	220
2"x1/2"	50x15	2x8	16	292
2"x3/4"	50x20	2x8	16	335



BRASS M.T.A. (ROUND) (SDR-11)				
SIZE		PACKING		RATE
INCH	MM	BAG	CARTOON	
1/2"	15	32x6	192	95
3/4"	20	17x8	136	125
1"	25	10x8	80	215
1.1/4"	32	5x7	35	385
1.1/2"	40	5x6	30	495
2"	50	2x12	24	630
3/4"x1/2"	20x15	25x8	200	92
1"x1/2"	25x15	18x8	144	106
1"x3/4"	25x20	15x8	120	140



BRASS F.T.A. (ROUND) (SDR-11)				
SIZE		PACKING		RATE
INCH	MM	BAG	CARTOON	
1/2"	15	42x6	252	59
3/4"	20	25x6	150	95
1"	25	12x8	96	132
1.1/4"	32	6x10	60	230
1.1/2"	40	4x10	40	305
2"	50	4x8	32	395
3/4"x1/2"	20x15	28x8	224	58
1"x1/2"	25x15	20x8	160	70
1"x3/4"	25x20	15x8	120	110

BRASS M.T.A. (ROUND) (SCH-80)				
SIZE		PACKING		RATE
INCH	MM	BAG	CARTOON	
2.1/2"	65	-	9	1350
3"	80	-	8	1710
4"	100	-	6	3150

BRASS F.T.A. (ROUND) (SCH-80)				
SIZE		PACKING		RATE
INCH	MM	BAG	CARTOON	
2.1/2"	65	-	15	980
3"	80	-	9	1390
4"	100	-	6	2080



BRASS M.T.A. (HEXAGON) (SDR-11)				
SIZE		PACKING		RATE
INCH	MM	BAG	CARTOON	
1/2"	15	-	-	-
3/4"	20	22x8	176	170
1"	25	13x6	78	265
1.1/4"	32	6x10	60	560
1.1/2"	40	4x10	40	850
2"	50	2x12	24	1190
3/4"x1/2"	20x15	24x8	192	130
1"x1/2"	25x15	15x8	120	230
1"x3/4"	25x20	14x8	112	270



BRASS F.T.A. (HEXAGON) (SDR-11)				
SIZE		PACKING		RATE
INCH	MM	BAG	CARTOON	
1/2"	15	-	-	-
3/4"	20	20x8	160	170
1"	25	11x6	66	280
1.1/4"	32	6x10	60	545
1.1/2"	40	4x10	40	670
2"	50	2x12	24	1070
3/4"x1/2"	20x15	20x8	160	145
-	-	-	-	-
-	-	-	-	-

cPVC Plumbing Pipes & Fittings

Mfg of : cPVC Fitting (1/2" to 2") ASTM D-2846 SDR-11 & (2.1/2" to 4") SCH-40 ASTM-F-438 SCH-80 ASTM-F-439
cPVC Pipes 1/2" to 2" ASTM D-2846 SDR-11 / SDR-13.5 (2.1/2" to 4") ASTM-F-441



BRASS ELBOW MABT (SDR-11)				
SIZE		PACKING		RATE
INCH	MM	BAG	CARTOON	
3/4"x1/2"	20x15	18x8	144	110
1"x1/2"	25x15	14x8	112	130



BRASS TEE MABT (SDR-11)				
SIZE		PACKING		RATE
INCH	MM	BAG	CARTOON	
3/4"x1/2"	20x15	12x8	96	125
1"x1/2"	25x15	6x8	48	135



CONCEALED VALVE (TRIANGLE)				
INCH	MM	BAG	CARTOON	RATE
3/4"	20	-	15	810
1"	25	-	15	850
1.1/4"	32	-	15	890



CONCEALED VALVE (FUSION)				
INCH	MM	BAG	CARTOON	RATE
3/4"	20	-	15	810
1"	25	-	15	850
1.1/4"	32	-	15	890



CONCEALED VALVE (FLT)				
INCH	MM	BAG	CARTOON	RATE
3/4"	20	-	15	810
1"	25	-	15	850
1.1/4"	32	-	15	890



CONCEALED VALVE (ORNAMIX)				
INCH	MM	BAG	CARTOON	RATE
3/4"	20	-	15	810
1"	25	-	15	850
1.1/4"	32	-	15	890



MIXER ADAPTOR (SDR-11)				
SIZE		PACKING		RATE
INCH	MM	BAG	CARTOON	
3/4"x1/2"	20x15	-	22	265
1"x1/2"	25x15	-	18	300
-	-	-	-	-



CROSS TEE (SDR-11)				
SIZE		PACKING		RATE
INCH	MM	BAG	CARTOON	
3/4"	20	14x8	112	31
1"	25	15x8	120	60
1.1/4"	32	8x8	64	103



NRV VALVE (SDR-11)				
SIZE		PACKING		RATE
INCH	MM	BAG	CARTOON	
3/4"	20	4x6	24	270
1"	25	4x6	24	290
1.1/4"	32	3x8	24	320



TRANSITION BUSH (uPVC TO cPVC) (SDR-11)				
SIZE		PACKING		RATE
INCH	MM	BAG	CARTOON	
1"x1"	25x25	30x8	240	15
1"x3/4"	25x20	30x8	240	27
3/4"x3/4"	20x20	40x8	320	10



REDUCER SOCKET (SDR-11)				
SIZE		PACKING		RATE
INCH	MM	BAG	CARTOON	
3/4"x1/2"	20x15	35x12	420	16
1"x1/2"	25x15	30x8	240	17
1"x3/4"	25x20	30x8	240	18
1.1/4"x3/4"	32x20	15x8	120	30
1.1/4"x1"	32x25	15x8	120	34
1.1/2"x3/4"	40x20	9x12	108	48
1.1/2"x1"	40x25	9x12	108	56
1.1/2"x1/4"	40x32	9x8	72	57
2"x3/4"	50x20	6x8	48	86
2"x1"	50x25	6x8	48	94
2"x1.1/4"	50x32	6x8	48	100
2"x1.1/2"	50x40	4x10	40	108
REDUCER SOCKET (SCH-80)				
2.1/2"x2"	65x50	-	24	214
3"x2"	80x50	-	16	282
3"x2.1/2"	80x65	-	16	318
4"x2"	100x50	-	8	447
4"x2.1/2"	100x65	-	8	489
4"x3"	100x80	-	8	547



REDUCER BUSH (SDR-11)				
SIZE		PACKING		RATE
INCH	MM	BAG	CARTOON	
3/4"x1/2"	20x15	40x16	640	10.5
1"x1/2"	25x15	40x8	320	11
1"x3/4"	25x20	40x8	320	11.5
1.1/4"x3/4"	32x20	30x8	240	21
1.1/4"x1"	32x25	30x8	240	23
1.1/2"x3/4"	40x20	20x7	140	32
1.1/2"x1"	40x25	20x7	140	33
1.1/2"x1/4"	40x32	18x8	144	34
2"x3/4"	50x20	8x8	64	76
2"x1"	50x25	8x8	64	77
2"x1.1/4"	50x32	8x8	64	78
2"x1.1/2"	50x40	8x8	64	79
REDUCER BUSH (SCH-80)				
2.1/2"x2"	65x50	6x6	36	128
3"x2"	80x50	-	18	256
3"x2.1/2"	80x65	-	18	262
4"x2"	100x50	-	12	336
4"x2.1/2"	100x65	-	12	358
4"x3"	100x80	-	12	360

cPVC Plumbing Pipes & Fittings

Mfg of : cPVC Fitting (1/2" to 2") ASTM D-2846 SDR-11 & (2.1/2" to 4") SCH-40 ASTM-F-438 SCH-80 ASTM-F-439
cPVC Pipes 1/2" to 2" ASTM D-2846 SDR-11 / SDR-13.5 (2.1/2" to 4") ASTM-F-441



TANK NIPPLE THREAD (SDR-11)				
SIZE		PACKING		RATE
INCH	MM	BAG	CARTOON	
1/2"	15	35x4	140	40
3/4"	20	25x8	200	55
1"	25	30x4	120	85
1.1/4"	32	10x8	80	150
1.1/2"	40	8x8	64	180
2"	50	5x8	40	282



BALL VALVE (SDR-11)				
INCH	MM	BAG	CARTOON	RATE
1/2"	15	24x6	144	120
3/4"	20	19x6	114	150
1"	25	12x6	72	212
1.1/4"	32	6x6	36	380
1.1/2"	40	4x6	24	576
2"	50	2x6	12	835



REDUCER ELBOW (SDR-11)				
SIZE		PACKING		RATE
INCH	MM	BAG	CARTOON	
1"x3/4"	25x20	30x8	240	26
1.1/4"x3/4"	32x20	18x4	72	48
1.1/4"x1"	32x25	16x4	64	57
1.1/2"x3/4"	40x20	7x6	42	80
1.1/2"x1"	40x25	7x6	42	85
1.1/2"x1.1/4"	40x32	6x6	36	95
2"x3/4"	50x20	3x8	24	173
2"x1"	50x25	3x8	24	177
2"x1.1/4"	50x32	3x8	24	186
2"x1.1/2"	50x40	3x8	24	191



THREAD ELBOW (SDR-11)				
SIZE		PACKING		RATE
INCH	MM	BAG	CARTOON	
3/4"x1/2"	20x15	22x8	176	34



THREAD TEE (SDR-11)				
SIZE		PACKING		RATE
INCH	MM	BAG	CARTOON	
3/4"x1/2"	20x15	15x8	120	38



END PLUG (SDR-11)				
SIZE		PACKING		RATE
INCH	MM	BAG	CARTOON	
1/2"	15	45x6	270	7.5



LONG BEND (SDR-11)				
SIZE		PACKING		RATE
INCH	MM	BAG	CARTOON	
1/2"	15	15x8	120	40
3/4"	20	16x4	64	54
1"	25	18x2	36	88
1.1/4"	32	10x4	40	145
1.1/2"	40	-	15	235
2"	50	-	10	435



STEP OVER BEND MOULDED (SDR-11)				
SIZE		PACKING		RATE
INCH	MM	BAG	CARTOON	
1/2"	15	30x4	120	40
3/4"	20	17x4	68	63
1"	25	18x5	90	78
1.1/4"	32	15x4	60	155
1.1/2"	40	-	12	276
2"	50	-	7	550



UNION TYPE BALL VALVE				
INCH	MM	BOX	CARTOON	RATE
2.1/2"	65	-	-	4320
3"	80	-	-	8350
4"	100	-	-	13000
-	-	-	-	-
-	-	-	-	-



BRASS UNION TYPE BALL VALVE				
INCH	MM	BOX	CARTOON	RATE
3/4"	20	2	-	650
1"	25	2	-	930
1.1/4"	32	1	-	2300
1.1/2"	40	1	-	2740
2"	50	1	-	6950

Product Features



HIGH STRENGTH
& DURABILITY



IDEAL FOR
DRINKING WATER



ULTRA VIOLET
RESISTANT



ULTRA VIOLET
RESISTANT



COLD WATER
PLUMBING



RESIDENTIAL
PURPOSES



NON-TOXIC
ECO FRIENDLY



LEAD FREE



ANTI-BACTERIAL



ANTI-FUNGAL

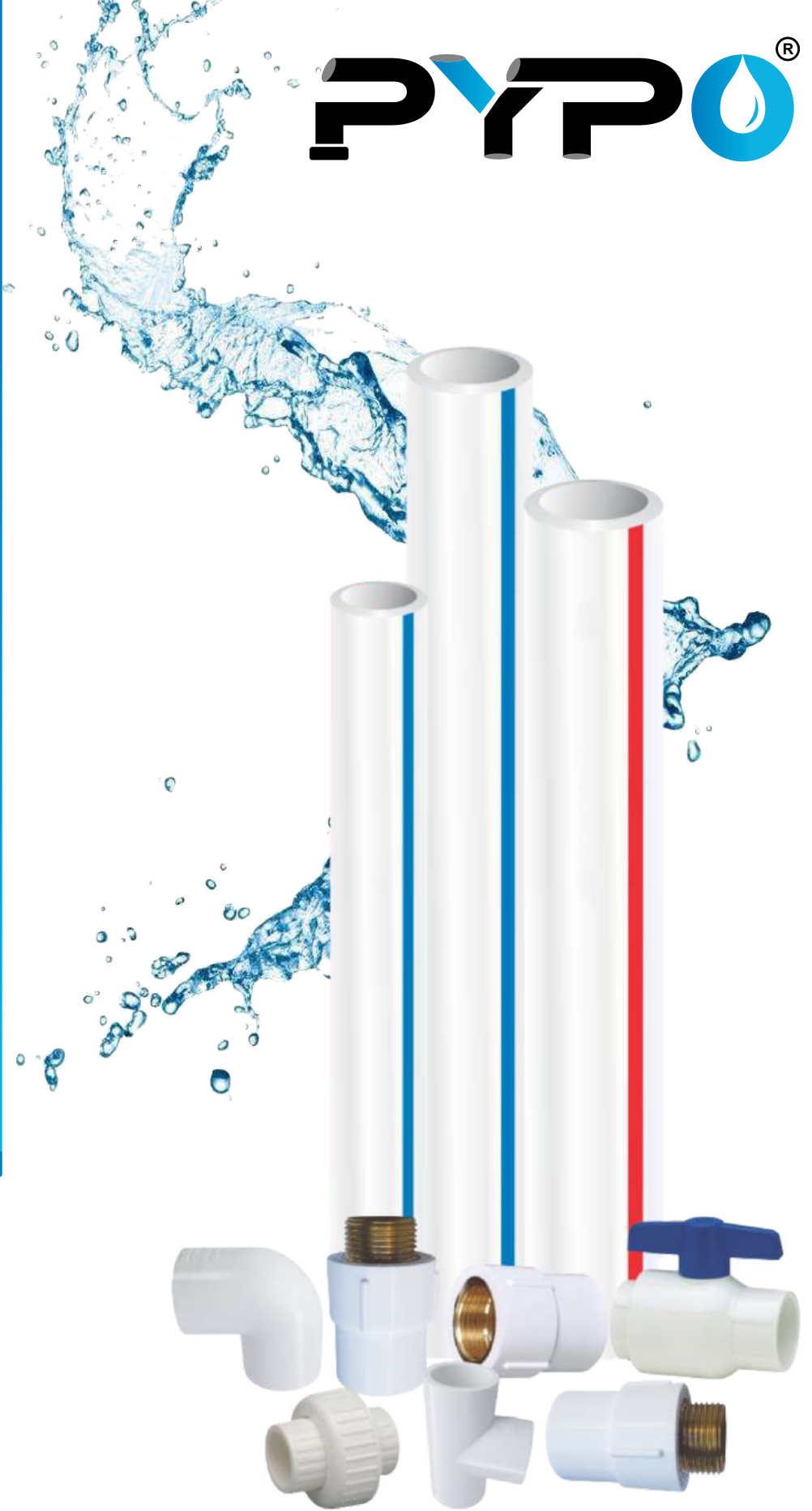


ANTI-ALGAE



ANTI-VIRAL
(INFLUENZA H1N1, SARS-COV-2)

PYPPO®

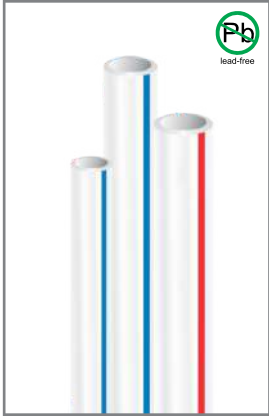


uPVC PIPES & FITTINGS

For COLD Water

uPVC Plumbing Pipes & Fittings

Mfg of : "Lead-Free" uPVC Pipe in ASTM D-1785 SCH-40 & SCH-80
Fitting : SCH-40 ASTM D-2466, SCH-80 ASTM D-2467



PYPO uPVC PIPES (SCH-40)				
SIZE (IN)	SIZE (MM)	3-MTR PACK	6-MTR PACK	RATE PER MTR
1/2"	15	50	25	52
3/4"	20	40	25	67
1"	25	25	15	102
1.1/4"	32	15	10	137
1.1/2"	40	12	8	165
2"	50	8	8	212
2.1/2"	65	5	5	340
3"	80	4	4	437
4"	100	2	2	650

PYPO uPVC PIPES (SCH-80)				
SIZE (IN)	SIZE (MM)	3-MTR PACK	6-MTR PACK	RATE PER MTR
1/2"	15	50	25	63
3/4"	20	40	25	88
1"	25	25	15	123
1.1/4"	32	15	10	175
1.1/2"	40	12	8	210
2"	50	8	8	283
2.1/2"	65	5	5	473
3"	80	4	4	600
4"	100	2	2	890



ELBOW 90° (SCH-80)				
SIZE		PACKING		RATE
INCH	MM	BAG	CARTOON	
1/2"	15	90x4	360	9
3/4"	20	55x4	220	14.5
1"	25	30x4	120	22
1.1/4"	32	18x4	72	40
1.1/2"	40	12x4	48	55
2"	50	8x4	32	95

ELBOW 90° (SCH-40)				
SIZE		PACKING		RATE
INCH	MM	BAG	CARTOON	
2.1/2"	65	4x5	20	135
3"	80	4x3	12	220
4"	100	-	14	440



TEE (SCH-80)				
SIZE		PACKING		RATE
INCH	MM	BAG	CARTOON	
1/2"	15	60x4	240	13
3/4"	20	35x4	140	20.5
1"	25	20x4	80	32.5
1.1/4"	32	13x4	52	55
1.1/2"	40	12x3	36	78
2"	50	5x4	20	125

ELBOW 90° (SCH-40)				
SIZE		PACKING		RATE
INCH	MM	BAG	CARTOON	
2.1/2"	65	4x3	12	189
3"	80	3x3	9	295
4"	100	-	10	585



M.T.A. THREAD (SCH-80)				
SIZE		PACKING		RATE
INCH	MM	BAG	CARTOON	
1/2"	15	50x6	300	7
3/4"	20	50x8	400	10
1"	25	60x4	240	18
1.1/4"	32	9x20	180	26
1.1/2"	40	8x20	160	36
2"	50	12x8	96	53
2.1/2"	65	-	22	118
3"	80	-	16	182
4"	100	-	08	328



F.T.A. THREAD (SCH-80)				
SIZE		PACKING		RATE
INCH	MM	BAG	CARTOON	
1/2"	15	65x4	260	9
3/4"	20	45x8	360	13
1"	25	50x4	200	20
1.1/4"	32	25x4	100	34
1.1/2"	40	20x4	80	44
2"	50	15x4	60	62
2.1/2"	65	-	24	122
3"	80	-	24	195
4"	100	-	14	280



COUPLER (SCH-80)				
SIZE		PACKING		RATE
INCH	MM	BAG	CARTOON	
1/2"	15	70x8	560	7
3/4"	20	40x8	320	12
1"	25	45x4	180	19
1.1/4"	32	28x4	112	28
1.1/2"	40	20x4	80	35
2"	50	14x4	56	62
2.1/2"	65	9x4	36	91
3"	80	9x3	27	125
4"	100	-	10	243



END CAP (SCH-80)				
SIZE		PACKING		RATE
INCH	MM	BAG	CARTOON	
1/2"	15	53x8	424	5
3/4"	20	55x10	550	8
1"	25	50x3	150	13
1.1/4"	32	20x8	160	26
1.1/2"	40	17x8	136	34
2"	50	10x8	80	48
2.1/2"	65	12x2	24	72
3"	80	14x3	42	103
4"	100	-	10	210

uPVC Plumbing Pipes & Fittings

Mfg of : "Lead-Free" uPVC Pipe in ASTM D-1785 SCH-40 & SCH-80
Fitting : SCH-40 ASTM D-2466, SCH-80 ASTM D-2467



ELBOW 45° (SCH-80)				
SIZE		PACKING		RATE
INCH	MM	BAG	CARTOON	
1/2"	15	32x8	256	9
3/4"	20	35x8	280	17
1"	25	30x5	150	24
1.1/4"	32	11x8	88	33
1.1/2"	40	8x8	64	52
2"	50	10x4	40	81

ELBOW 45° (SCH-40)				
SIZE		PACKING		RATE
INCH	MM	BAG	CARTOON	
2.1/2"	65	4x6	24	114
3"	80	5x3	15	179
4"	100	-	16	342



SOCKET TANK NIPPLE (SCH-80)				
SIZE		PACKING		RATE
INCH	MM	BAG	CARTOON	
1/2"	15	40x8	320	19
3/4"	20	27x8	216	26
1"	25	30x4	120	40
1.1/4"	32	20x4	80	66
1.1/2"	40	15x4	60	82
2"	50	10x4	40	118

SOCKET TANK NIPPLE (SCH-40)				
SIZE		PACKING		RATE
INCH	MM	BAG	CARTOON	
2.1/2"	65	-	9	196
3"	80	-	9	243
4"	100	-	6	380



REDUCER BUSH (SCH-80)				
SIZE		PACKING		RATE
INCH	MM	BAG	CARTOON	
3/4"x1/2"	20x15	38x10	380	5
1"x1/2"	25x15	60x8	480	11
1"x3/4"	25x20	55x8	440	12
1.1/4"x1/2"	32x15	18x8	144	20
1.1/4"x3/4"	32x20	18x8	144	21
1.1/4"x1"	32x25	18x8	144	22
1.1/2"x1/2"	40x15	12x8	96	24
1.1/2"x3/4"	40x20	12x8	96	25
1.1/2"x1"	40x25	12x8	96	27
1.1/2"x1.1/4"	40x32	12x8	96	28
2"x1/2"	50x15	8x8	64	29
2"x3/4"	50x20	8x8	64	30
2"x1"	50x25	8x8	64	31
2"x1.1/4"	50x32	8x8	64	32
2"x1.1/2"	50x40	8x8	64	33
2.1/2"x2"	65x50	6x6	36	60
3"x2"	80x50	-	18	116
3"x2.1/2"	80x65	-	18	120
4"x2"	100x50	-	12	152
4"x2.1/2"	100x65	-	12	159
4"x3"	100x80	-	12	164



REDUCER SOCKET (SCH-80)				
SIZE		PACKING		RATE
INCH	MM	BAG	CARTOON	
3/4"x1/2"	20x15	32x10	320	12
1"x1/2"	25x15	25x8	200	18
1"x3/4"	25x20	25x8	200	20
1.1/4"x1/2"	32x15	9x10	90	26
1.1/4"x3/4"	32x20	9x10	90	27
1.1/4"x1"	32x25	15x4	60	32
1.1/2"x1/2"	40x15	14x4	56	33
1.1/2"x3/4"	40x20	13x4	52	34
1.1/2"x1"	40x25	12x4	48	43
1.1/2"x1.1/4"	40x32	10x4	40	46
2"x1/2"	50x15	6x8	48	50
2"x3/4"	50x20	6x8	48	51
2"x1"	50x25	6x6	36	64
2"x1.1/4"	50x32	6x8	48	65
2"x1.1/2"	50x40	4x8	32	67
2.1/2"x2"	65x50	-	24	91
3"x2"	80x50	-	16	120
3"x2.1/2"	80x65	-	16	134
4"x2"	100x50	-	8	202
4"x2.1/2"	100x65	-	8	217
4"x3"	100x80	-	8	245



UNION (SCH-80)				
SIZE		PACKING		RATE
INCH	MM	BAG	CARTOON	
1/2"	15	28x8	224	27
3/4"	20	16x8	128	33
1"	25	22x4	88	51
1.1/4"	32	8x8	64	73
1.1/2"	40	11x4	44	110
2"	50	9x3	27	166
2.1/2"	65	-	24	280
3"	80	-	12	395
4"	100	-	4	856



LONG BEND (SCH-40)				
SIZE		PACKING		RATE
INCH	MM	BAG	CARTOON	
1/2"	15	32x2	64	34
3/4"	20	21x2	42	46
1"	25	12x4	48	70
1.1/4"	32	-	15	105
1.1/2"	40	-	12	135
2"	50	-	8	210
2.1/2"	65	-	-	-
3"	80	-	-	-
4"	100	-	-	-

uPVC Plumbing Pipes & Fittings

Mfg of : "Lead-Free" uPVC Pipe in ASTM D-1785 SCH-40 & SCH-80
Fitting : SCH-40 ASTM D-2466, SCH-80 ASTM D-2467



BRASS ELBOW (SCH-80)				
SIZE		PACKING		RATE
INCH	MM	BAG	CARTOON	
1/2"	15	60x2	120	58
3/4"	20	10x8	80	105
1"	25	6x8	48	160
3/4"x1/2"	20x15	28x4	112	70
1"x1/2"	25x15	18x4	72	82
1"x3/4"	25x20	10x6	60	120
-	-	-	-	-
-	-	-	-	-
-	-	-	-	-
-	-	-	-	-
-	-	-	-	-



BRASS TEE (SCH-80)				
SIZE		PACKING		RATE
INCH	MM	BAG	CARTOON	
1/2"	15	15x6	90	68
3/4"	20	10x6	60	120
1"	25	10x4	40	170
3/4"x1/2"	20x15	30x2	60	76
1"x1/2"	25x15	11x4	44	92
1"x3/4"	25x20	5x8	40	135
1.1/4"x1/2"	32x15	3x12	36	130
1.1/4"x3/4"	32x20	3x12	36	155
1.1/2"x1/2"	40x15	3x7	21	156
1.1/2"x3/4"	40x20	3x7	21	180
2"x1/2"	50x15	2x8	16	200
2"x3/4"	50x20	2x8	16	230



BRASS ELBOW MABT (SCH-80)				
SIZE		PACKING		RATE
INCH	MM	BAG	CARTOON	
1/2"	15	13x8	104	110
3/4"x1/2"	20x15	11x8	88	140



BRASS TEE MABT (SCH-80)				
SIZE		PACKING		RATE
INCH	MM	BAG	CARTOON	
1/2"	15	10x8	80	120
3/4"x1/2"	20x15	6x8	48	150



BRASS M.T.A (SCH-80)				
SIZE		PACKING		RATE
INCH	MM	BAG	CARTOON	
1/2"	15	20x8	160	95
3/4"	20	14x8	112	130
1"	25	16x4	64	215
1.1/4"	32	4x8	32	410
1.1/2"	40	4x8	32	510
2"	50	2x10	20	680
2.1/2"	65	-	9	1310
3"	80	-	8	1700
4"	100	-	6	2900
3/4"x1/2"	20x15	15x8	120	100
1"x1/2"	25x15	15x8	96	110
1"x3/4"	25x20	10x8	80	165



BRASS F.T.A (SCH-80)				
SIZE		PACKING		RATE
INCH	MM	BAG	CARTOON	
1/2"	15	45x4	180	60
3/4"	20	15x8	120	104
1"	25	19x4	76	147
1.1/4"	32	4x10	40	230
1.1/2"	40	4x10	40	300
2"	50	4x7	28	400
2.1/2"	65	-	15	900
3"	80	-	9	1280
4"	100	-	6	1900
3/4"x1/2"	20x15	20x8	160	63
1"x1/2"	25x15	30x4	120	67
1"x3/4"	25x20	11x8	88	120



CONCEALED VALVE (TRIANGLE)				
SIZE		PACKING		RATE
INCH	MM	BAG	CARTOON	
1/2"	15	-	15	920
3/4"	20	-	15	930
1"	25	-	15	940



CONCEALED VALVE (FUSION)				
SIZE		PACKING		RATE
INCH	MM	BAG	CARTOON	
1/2"	15	-	15	920
3/4"	20	-	15	930
1"	25	-	15	940



CONCEALED VALVE (FLT)				
SIZE		PACKING		RATE
INCH	MM	BAG	CARTOON	
1/2"	15	-	15	920
3/4"	20	-	15	930
1"	25	-	15	940



CONCEALED VALVE (ORNAMIX)				
SIZE		PACKING		RATE
INCH	MM	BAG	CARTOON	
1/2"	15	-	15	920
3/4"	20	-	15	930
1"	25	-	15	940

uPVC Plumbing Pipes & Fittings

Mfg of : "Lead-Free" uPVC Pipe in ASTM D-1785 SCH-40 & SCH-80
 Fitting : SCH-40 ASTM D-2466, SCH-80 ASTM D-2467



GEMINI BALL VALVE (SCH-80)				
SIZE		PACKING		RATE
INCH	MM	BAG	CARTOON	
1/2"	15	20x6	120	76
3/4"	20	13x6	78	110
1"	25	9x6	54	160
1.1/4"	32	6x6	36	235
1.1/2"	40	4x6	24	320
2"	50	2x6	12	510
2.1/2"	65	-	-	-
3"	80	-	-	-
4"	100	-	-	-



SUPREME BALL VALVE (SCH-80)				
SIZE		PACKING		RATE
INCH	MM	BAG	CARTOON	
1/2"	15	32x6	192	80
3/4"	20	19x6	114	115
1"	25	12x6	72	175
1.1/4"	32	6x6	36	280
1.1/2"	40	4x6	24	390
2"	50	2x6	12	570
2.1/2"	65	-	-	-
3"	80	-	-	-
4"	100	-	-	-



APPLE CUT BALL VALVE (SCH-80)				
SIZE		PACKING		RATE
INCH	MM	BAG	CARTOON	
1/2"	15	24x6	144	73
3/4"	20	14x6	84	95
1"	25	10x6	60	127
1.1/4"	32	6x6	36	224
1.1/2"	40	4x6	24	280
2"	50	2x6	12	390



STEP OVER BEND MOULDED (SCH-80)				
SIZE		PACKING		RATE
INCH	MM	BAG	CARTOON	
1/2"	15	17x4	68	37
3/4"	20	18x5	90	46
1"	25	15x4	60	83
1.1/4"	32	-	15	113
1.1/2"	40	-	12	156
2"	50	-	8	232



TANK NIPPLE THREAD (SCH-80)				
SIZE		PACKING		RATE
INCH	MM	BAG	CARTOON	
1/2"	15	35x8	280	21
3/4"	20	25x8	200	27
1"	25	30x4	120	43
1.1/4"	32	16x4	64	65
1.1/2"	40	14x4	56	78
2"	50	9x4	36	110



TANK NIPPLE PIPE (SCH-80)				
SIZE		PACKING		RATE
INCH	MM	BAG	CARTOON	
1/2"	15	50x4	200	25
3/4"	20	35x4	140	36
1"	25	25x4	100	52
1.1/4"	32	16x4	64	82
1.1/2"	40	13x4	52	92
2"	50	9x4	36	132



REDUCER TEE (SCH-80)				
SIZE		PACKING		RATE
INCH	MM	BAG	CARTOON	
3/4"x1/2"	20x15	23x8	184	24
1"x1/2"	25x15	30x4	120	33
1"x3/4"	25x20	16x6	96	40
1.1/4"x1/2"	32x15	10x6	60	60
1.1/4"x3/4"	32x20	10x6	60	62
1.1/4"x1"	32x25	9x6	54	66
1.1/2"x1/2"	40x15	7x6	42	77
1.1/2"x3/4"	40x20	7x6	42	80
1.1/2"x1"	40x25	7x6	42	88
1.1/2"x1.1/4"	40x32	6x6	36	90
2"x1/2"	50x15	6x4	24	128
2"x3/4"	50x20	6x4	24	122
2"x1"	50x25	6x4	24	124
2"x1.1/4"	50x32	5x4	20	128
2"x1.1/2"	50x40	5x4	20	132
-	-	-	-	-
-	-	-	-	-



NRV VALVE (SCH-80)				
SIZE		PACKING		RATE
INCH	MM	BAG	CARTOON	
1/2"	15	4x6	24	168
3/4"	20	4x6	24	176
1"	25	4x6	24	184



REDUCER ELBOW (SCH-80)				
SIZE		PACKING		RATE
INCH	MM	BAG	CARTOON	
3/4"x1/2"	20x15	35x8	280	19
1"x1/2"	25x15	25x7	175	30
1"x3/4"	25x20	18x8	144	33



TRANSITION BUSH (uPVC to cPVC) (SCH-80)				
SIZE		PACKING		RATE
INCH	MM	BAG	CARTOON	
1"x1"	25x25	30x8	240	7
1"x3/4"	25x20	30x8	240	13
3/4"x3/4"	20x20	30x10	300	5

uPVC Plumbing Pipes & Fittings

Mfg of : "Lead-Free" uPVC Pipe in ASTM D-1785 SCH-40 & SCH-80
Fitting : SCH-40 ASTM D-2466, SCH-80 ASTM D-2467



THREAD ELBOW (SCH-80)				
SIZE		PACKING		RATE
INCH	MM	BAG	CARTOON	
1/2"	15	22x8	176	17
3/4"	20	18x6	108	26
1"	25	15x4	60	41
3/4"x1/2"	20x15	15x8	120	23
1"x1/2"	25x15	10x8	80	31



THREAD TEE (SCH-80)				
SIZE		PACKING		RATE
INCH	MM	BAG	CARTOON	
1/2"	15	15x8	120	25
3/4"	20	12x6	72	35
1"	25	6x6	36	51
3/4"x1/2"	20x15	10x8	80	29
1"x1/2"	25x15	8x6	48	39



CROSS TEE (SCH-80)				
SIZE		PACKING		RATE
INCH	MM	BAG	CARTOON	
1/2"	15	25x8	200	23
3/4"	20	15x8	120	35
1"	25	15x4	60	58



UNION TYPE BALL VALVE				
SIZE		PACKING		RATE
INCH	MM	BAG	CARTOON	
2.1/2"	65	-	-	2600
3"	80	-	-	4000
4"	100	-	-	7400



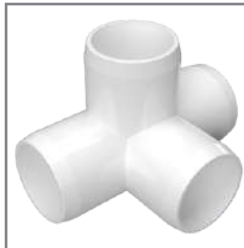
END PLUG				
SIZE		PACKING		RATE
INCH	MM	BAG	CARTOON	
1/2"	15	45x6	270	8



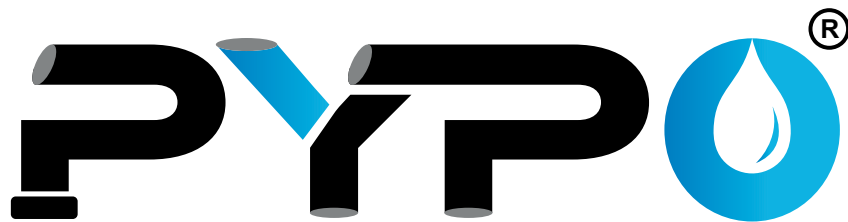
SOLID END PLUG (BLACK)				
SIZE		PACKING		RATE
INCH	MM	BAG	CARTOON	
1/2"	15	70x6	420	3



ELBOW 3 WAY				
SIZE		PACKING		RATE
INCH	MM	BAG	CARTOON	
1/2"	15	-	-	15
3/4"	20	-	-	30
1"	25	-	-	44



ELBOW 4 WAY				
SIZE		PACKING		RATE
INCH	MM	BAG	CARTOON	
1/2"	15	-	-	25
3/4"	20	-	-	65
1"	25	-	-	115



Product Features



LIGHT WEIGHT



SEWAGE & WASTE WATER LINES



LEAK PROOF JOINTS



INDUSTRIAL, OFFICE & RESIDENTIAL USAGE



ULTRA VOILET STABILIZED



RAIN WATER DRAINAGE



ANTI-BACTERIAL



ANTI-FUNGAL



ANTI-ALGAE



ANTI-VIRAL
(INFLUENZA H1N1, SARS-COV-2)

PYPPO®



SWR PIPES & FITTINGS

For Sewage Waste & Rain Water

SWR RING FIT PIPES & FITTINGS

SWR RING FIT PIPES AS PER IS : 13592, SWR RING FIT FITTINGS AS PER IS : 14735

*Below All Prices are Inclusive of PP Fix Rubber Ring



SWR RING FIT PIPE (TYPE-A) SINGLE SOCKET			
INCH	SIZE (MM)	STD. LENGTH (FEET)	RATE PER PCS
2.1/2"	75	10	423
3"	90	10	545
4"	110	10	750
6"	160	10	1580
SINGLE SOCKET 6 FEET			
2.1/2"	75	6	270
3"	90	6	348
4"	110	6	475
SINGLE SOCKET 4 FEET			
2.1/2"	75	4	182
3"	90	4	234
4"	110	4	320
SINGLE SOCKET 2 FEET			
2.1/2"	75	2	94
3"	90	2	121
4"	110	2	164

SWR RING FIT PIPE (TYPE-A) DOUBLE SOCKET			
INCH	SIZE (MM)	STD. LENGTH (FEET)	RATE PER PCS
2.1/2"	75	10	448
3"	90	10	575
4"	110	10	790
6"	160	10	1650
DOUBLE SOCKET 6 FEET			
2.1/2"	75	6	275
3"	90	6	355
4"	110	6	485
DOUBLE SOCKET 4 FEET			
2.1/2"	75	4	188
3"	90	4	242
4"	110	4	330
DOUBLE SOCKET 2 FEET			
2.1/2"	75	2	100
3"	90	2	130
4"	110	2	175



BEND 87.5°		
SIZE	BOX	RATE
75	100	70
90	60	99
110	40	127
160	14	350



BEND 87.5° (DOOR)		
SIZE	BOX	RATE
75	84	104
90	50	140
110	32	204
160	12	456



SHOE BEND 45°		
SIZE	BOX	RATE
75	58	56
90	75	77
110	52	120
160	15	310



TEE 87.5°		
SIZE	BOX	RATE
75	65	100
90	45	150
110	28	200
160	9	577



TEE (DOOR)		
SIZE	BOX	RATE
75	55	159
90	36	201
110	20	266
160	7	627



COUPLER		
SIZE	BOX	RATE
75	75	51
90	45	80
110	72	96
160	27	288



REDUCER TEE		
SIZE	BOX	RATE
110x75	30	190
110x90	28	212
160x110	10	509



REDUCER TEE (DOOR)		
SIZE	BOX	RATE
110x75	24	205
110x90	20	264
160x110	9	554



CLEANSING PIPE		
SIZE	BOX	RATE
75	42	121
90	22	167
110	32	212



SINGLE Y		
SIZE	BOX	RATE
75	24	125
90	30	200
110	21	281



SINGLE Y (DOOR)		
SIZE	BOX	RATE
75	22	159
90	28	236
110	18	346



REDUCER BUSH		
SIZE	BOX	RATE
110x63	15	63
110x75	15	61
110x90	15	59



CROSS TEE		
SIZE	BOX	RATE
75	48	142
90	28	212
110	20	273



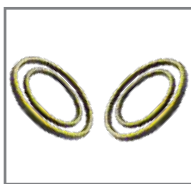
CROSS TEE (DOOR)		
SIZE	BOX	RATE
75	42	152
90	20	258
110	16	319



SOCKET PLUG		
SIZE	BOX	RATE
75	36	49
90	-	-
110	25	95



REDUCER SOCKET		
SIZE	BOX	RATE
110x75	45	95
110x90	30	100
160x90	24	174
160x110	24	190



SWR RUBBER RING		
SIZE	BOX	RATE
75	680	4.3
90	420	5.8
110	250	6.6
160	75	17.3



BACKFLOW PREVENTER		
SIZE	BOX	RATE
110	-	1750
-	-	-
-	-	-
-	-	-

SWR SEL FIT PIPES & FITTINGS

SWR SEL FIT PIPES AS PER IS : 13592, SWR SEL FIT FITTINGS AS PER IS : 14735



A TYPE SINGLE SOCKET (SEL FIT 10-FT)			
INCH	SIZE (MM)	STD. LENGTH (FEET)	RATE PER PCS
1.1/4"	40 MM	10	184
1.1/2"	50 MM	10	270
2"	63 MM	10	300
2.1/2"	75 MM	10	410
3"	90 MM	10	540
4"	110 MM	10	740
5"	140 MM	10	1252
6"	160 MM	10	1550

A TYPE SINGLE SOCKET (SEL FIT 20-FT)			
INCH	SIZE (MM)	STD. LENGTH (FEET)	RATE PER PCS
1.1/4"	40 MM	20	368
1.1/2"	50 MM	20	540
2"	63 MM	20	600
2.1/2"	75 MM	20	820
3"	90 MM	20	1080
4"	110 MM	20	1480
5"	140 MM	20	2504
6"	160 MM	20	3100



BEND 87.5°		
SIZE	BOX	RATE
75	52	60
90	75	82
110	45	120
160	14	365



BEND 87.5° (DOOR)		
SIZE	BOX	RATE
75	42	88
90	65	122
110	36	175
160	12	435



SHOE BEND 45°		
SIZE	BOX	RATE
75	65	50
90	40	70
110	60	100
160	18	305



TEE 87.5°		
SIZE	BOX	RATE
75	80	84
90	50	115
110	30	170
160	9	532



TEE (DOOR)		
SIZE	BOX	RATE
75	65	145
90	36	183
110	20	246
160	7	586



REDUCER SOCKET		
SIZE	BOX	RATE
100x75	45	92
110x90	45	96
160x90	24	172
160x110	24	180



REDUCER TEE		
SIZE	BOX	RATE
110x75	30	177
110x90	28	198
160x110	10	495



REDUCER TEE (DOOR)		
SIZE	BOX	RATE
110x75	24	190
110x90	20	250
160x110	9	548



CLEANSING PIPE		
SIZE	BOX	RATE
75	42	110
90	22	160
110	32	192



CROSS TEE		
SIZE	BOX	RATE
75	48	130
90	28	190
110	20	251



CROSS TEE (DOOR)		
SIZE	BOX	RATE
75	42	140
90	24	236
110	16	300



PVC JALI		
SIZE	BOX	RATE
SQUARE WITH ROUND JALI	60	98
ROUND JALI	200	38



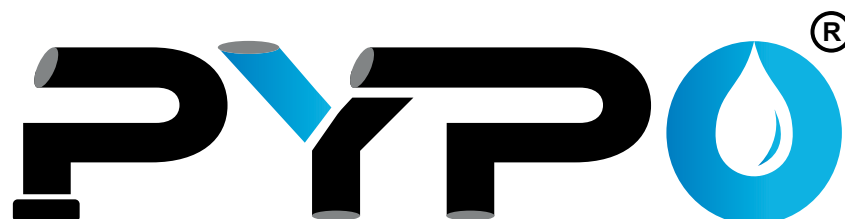
SINGLE Y		
SIZE	BOX	RATE
75	24	114
90	30	187
110	21	275



SINGLE Y (DOOR)		
SIZE	BOX	RATE
75	22	148
90	28	217
110	18	327



BACKFLOW PREVENTER		
SIZE	BOX	RATE
110	-	1740



Product Features



HIGH STRENGTH
& DURABILITY



AGRICULTURAL &
IRRIGATION USAGE



CRACK &
LEAK PROOF



IDEAL FOR HARSH
ENVIRONMENTS



SMOOTH FLOW
INTERNAL SURFACE



LEAD FREE



ANTI-BACTERIAL



ANTI-FUNGAL



ANTI-ALGAE



ANTI-VIRAL
(INFLUENZA H1N1, SARS-COV-2)

PYPPO®



AGRICULTURE

PVC

PIPES & FITTINGS

For Agriculture & Water Distribution System

AGRICULTURE - PVC

Sel-Fit Pipes & Fittings Pipe IS : 4985 & Fittings IS : 7834



PVC ISI SEL FIT PIPE

INCH	MM	FEET	2.5 Kg/Cm ²	4 Kg/Cm ²	6 Kg/Cm ²	10 Kg/Cm ² (HIGH PRESSURE)
			RATE PER PCS	RATE PER PCS	RATE PER PCS	RATE PER PCS
1/2"	20 MM	20	-	-	-	144
3/4"	25 MM	20	-	-	-	220
1"	32 MM	20	-	-	-	352
1.1/4"	40 MM	20	-	-	368	-
1.1/2"	50 MM	20	-	-	540	-
2"	63 MM	20	-	600	825	-
2.1/2"	75 MM	20	*756	830	1160	-
3"	90 MM	20	910	1150	1660	-
4"	110 MM	20	1310	1680	2400	-
5"	140 MM	20	2010	2750	3800	-
6"	160 MM	20	2530	3600	5050	-
7"	180 MM	20	3200	4400	6350	-
8"	200 MM	20	4000	5550	8200	-

PVC ESR ISI RING FIT PIPE

4 Kg/Cm ²	6 Kg/Cm ²
RATE PER PCS	RATE PER PCS
-	-
-	-
-	-
-	-
-	-
650	900
900	1260
1240	1800
1830	2600
2950	4100
3900	5450
4800	6850
6000	8900



BRASS ELBOW 16-kg/cm² (PN-16)

SIZE	MM	BAG	CARTOON	RATE
3/4"x1/2"	25x1/2"	20x6	120	57
1"x1/2"	32x1/2"	14x6	84	63



BRASS M.T.A. 16-kg/cm² (PN-16)

SIZE	MM	BAG	CARTOON	RATE
3/4"x1/2"	25x1/2"	20x6	144	95
1"x1/2"	32x1/2"	14x8	112	100



BRASS ELBOW 10-kg/cm² (PN-10)

SIZE	MM	BAG	CARTOON	RATE
1/2"	20x1/2"	28x8	224	48
3/4"x1/2"	25x1/2"	20x8	160	54
1"x1/2"	32x1/2"	17x6	102	59



BRASS M.T.A. 10-kg/cm² (PN-10)

SIZE	MM	BAG	CARTOON	RATE
1/2"	20x1/2"	30x8	240	90
3/4"x1/2"	25x1/2"	25x8	200	94
1"x1/2"	32x1/2"	20x8	160	98



ELBOW (L-W) 4-kg/cm²

SIZE	MM	BAG	CARTOON	RATE
1.1/4"	40	28x4	112	12
1.1/2"	50	21x3	63	18
2"	63	11x3	33	30
2.1/2"	75	-	55	37
3"	90	-	76	59
4"	110	-	48	75
5"	140	-	21	175
6"	160	-	17	230



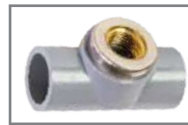
ELBOW ISI 10-kg/cm²

SIZE	MM	BAG	CARTOON	RATE
1/2"	20	110x6	660	6
3/4"	25	20x8	160	8.5
1"	32	24x4	96	12.5



ELBOW ISI 6-kg/cm²

SIZE	MM	BAG	CARTOON	RATE
1.1/4"	40	25x4	100	19.5
1.1/2"	50	14x4	56	31
2"	63	7x4	28	45
2.1/2"	75	-	48	62
3"	90	-	70	104
4"	110	-	40	168
5"	140	-	18	340
6"	160	-	14	500
4"x3"	110x90	-	62	100



BRASS TEE 16-kg/cm² (PN-16)

SIZE	MM	BAG	CARTOON	RATE
3/4"x1/2"	25x1/2"	10x8	80	60
1"x1/2"	32x1/2"	9x6	54	70



BRASS F.T.A. 16-kg/cm² (PN-16)

SIZE	MM	BAG	CARTOON	RATE
3/4"x1/2"	25x1/2"	22x8	176	52
1"x1/2"	32x1/2"	15x8	120	58



BRASS TEE 10-kg/cm² (PN-10)

SIZE	MM	BAG	CARTOON	RATE
1/2"	20x1/2"	19x8	152	51
3/4"x1/2"	25x1/2"	14x8	112	56
1"x1/2"	32x1/2"	8x8	64	64



BRASS F.T.A. 10-kg/cm² (PN-10)

SIZE	MM	BAG	CARTOON	RATE
1/2"	20x1/2"	32x8	256	47
3/4"x1/2"	25x1/2"	28x8	224	49
1"x1/2"	32x1/2"	22x8	176	55



TEE (L-W) 4-kg/cm²

SIZE	MM	BAG	CARTOON	RATE
1.1/4"	40	23x3	69	15
1.1/2"	50	14x3	42	22
2"	63	-	58	45
2.1/2"	75	-	40	53
3"	90	-	60	78
4"	110	-	28	116
5"	140	-	14	275
6"	160	-	10	365



TEE ISI 10-kg/cm²

SIZE	MM	BAG	CARTOON	RATE
1/2"	20	28x6	168	8
3/4"	25	13x8	104	12
1"	32	16x4	64	17



TEE ISI 6-kg/cm²

SIZE	MM	BAG	CARTOON	RATE
1.1/4"	40	17x4	68	26
1.1/2"	50	9x4	36	44
2"	63	-	55	67
2.1/2"	75	-	34	94
3"	90	-	50	145
4"	110	-	28	255
5"	140	-	12	470
6"	160	-	10	700
-	-	-	-	-

AGRICULTURE - PVC

Sel-Fit Pipes & Fittings Pipe IS : 4985 & Fittings IS : 7834



COUPLER 10-kg/cm ²				
SIZE	MM	BAG	CARTOON	RATE
1/2"	20	45x8	360	4.5
3/4"	25	30x8	240	6.5
1"	32	36x4	144	9



SHOE BEND 45° (EQUAL) 10-kg/cm ²				
SIZE	MM	BAG	CARTOON	RATE
1/2"	20	40x8	320	7
3/4"	25	28x6	168	9
1"	32	25x4	100	14



COUPLER 6-kg/cm ²				
SIZE	MM	BAG	CARTOON	RATE
1.1/4"	40	20x8	160	10.5
1.1/2"	50	23x4	92	15.5
2"	63	14x4	56	28
2.1/2"	75	-	90	40
3"	90	-	63	60
4"	110	-	80	100
5"	140	-	36	185
6"	160	-	27	220



SHOE BEND 45° (EQUAL) 6-kg/cm ²				
SIZE	MM	BAG	CARTOON	RATE
1.1/4"	40	15x8	120	21
1.1/2"	50	11x6	66	42
2"	63	10x4	40	57
2.1/2"	75	-	65	61
3"	90	-	40	82
4"	110	-	60	114
5"	140	-	27	274
6"	160	-	18	411



REDUCER SOCKET 10-kg/cm ²				
SIZE	MM	BAG	CARTOON	RATE
3/4"x1/2"	25x20	27x10	270	7
1"x1/2"	32x20	25x8	200	10
1"x3/4"	32x25	24x8	192	10



REDUCER BUSH 10-kg/cm ²				
SIZE	MM	BAG	CARTOON	RATE
3/4"x1/2"	25x20	55x10	550	4
1"x1/2"	32x20	40x8	320	7
1"x3/4"	32x25	40x8	320	7



REDUCER SOCKET 6-kg/cm ²				
SIZE	MM	BAG	CARTOON	RATE
1.1/4"x3/4"	40x25	30x4	120	13
1.1/4"x1"	40x32	26x4	104	14
1.1/2"x1"	50x32	12x10	120	18
1.1/2"x1.1/4"	50x40	9x10	90	20
2"x1"	63x32	28x5	140	27
2"x1.1/4"	63x40	28x5	140	28
2"x1.1/2"	63x50	28x5	140	35
2.1/2"x1.1/4"	75x40	18x4	72	41
2.1/2"x1.1/2"	75x50	18x4	72	42
2.1/2"x2"	75x63	18x4	72	45
3"x1.1/2"	90x50	-	45	53
3"x2"	90x63	-	45	62
3"x2.1/2"	90x75	-	45	65
4"x2"	110x63	-	60	100
4"x2.1/2"	110x75	-	60	105
4"x3"	110x90	-	60	106
5"x2"	140x63	-	28	145
5"x2.1/2"	140x75	-	28	150
5"x3"	140x90	-	28	160
5"x4"	140x110	-	28	172
6"x2"	160x63	-	21	180
6"x2.1/2"	160x75	-	21	181
6"x3"	160x90	-	21	183
6"x4"	160x110	-	21	200
6"x5"	160x140	-	21	206



REDUCER BUSH 6-kg/cm ²				
SIZE	MM	BAG	CARTOON	RATE
1.1/4"x3/4"	40x25	20x8	160	11
1.1/4"x1"	40x32	20x8	160	12
1.1/2"x1"	50x32	12x8	96	22
1.1/2"x1.1/4"	50x40	12x8	96	23
2"x1"	63x32	8x8	64	30
2"x1.1/4"	63x40	8x8	64	31
2"x1.1/2"	63x50	8x8	64	33
2.1/2"x1.1/4"	75x40	6x7	42	50
2.1/2"x1.1/2"	75x50	6x7	42	51
2.1/2"x2"	75x63	6x7	42	52
3"x1.1/2"	90x50	-	27	67
3"x2"	90x63	-	27	71
3"x2.1/2"	90x75	-	27	72
4"x2"	110x63	-	15	92
4"x2.1/2"	110x75	-	15	93
4"x3"	110x90	-	15	117
5"x2"	140x63	-	16	239
5"x2.1/2"	140x75	-	16	246
5"x3"	140x90	-	16	235
5"x4"	140x110	-	16	243
6"x2"	160x63	-	28	281
6"x2.1/2"	160x75	-	28	285
6"x3"	160x90	-	28	288
6"x4"	160x110	-	28	290
6"x5"	160x140	-	28	295



DOOR ELBOW 4-kg/cm ²				
SIZE		PACKING		RATE
INCH	MM	BAG	CARTOON	
1.1/4"	40	20x4	80	33
1.1/2"	50	15x3	45	45
2"	63	9x3	27	60
2.1/2"	75	-	45	90
3"	90	-	70	120
4"	110	-	38	185



DOOR TEE 4-kg/cm ²				
SIZE		PACKING		RATE
INCH	MM	BAG	CARTOON	
1.1/4"	40	8x6	48	44
1.1/2"	50	9x3	27	60
2"	63	-	50	84
2.1/2"	75	-	30	124
3"	90	-	45	164
4"	110	-	30	256

AGRICULTURE - PVC

Sel-Fit Pipes & Fittings Pipe IS : 4985 & Fittings IS : 7834



M.T.A. THREAD 10-kg/cm ²				
SIZE	MM	BAG	CARTOON	RATE
1/2"	20	40x8	320	5
3/4"	25	40x6	240	8
1"	32	55x6	330	10



F.T.A. THREAD 10-kg/cm ²				
SIZE	MM	BAG	CARTOON	RATE
1/2"	20	35x8	280	6
3/4"	25	35x6	210	9
1"	32	45x6	270	11



M.T.A. THREAD 6-kg/cm ²				
SIZE	MM	BAG	CARTOON	RATE
1.1/4"	40	30x6	180	16
1.1/2"	50	18x6	108	24
2"	63	17x4	68	32
2.1/2"	75	-	72	46
3"	90	-	45	66
4"	110	-	42	100
5"	140	-	24	205
6"	160	-	16	280



F.T.A. THREAD 6-kg/cm ²				
SIZE	MM	BAG	CARTOON	RATE
1.1/4"	40	25x6	150	17
1.1/2"	50	22x4	88	25
2"	63	13x4	52	36
2.1/2"	75	-	48	54
3"	90	-	27	76
4"	110	-	42	110
5"	140	-	16	235
6"	160	-	16	265



REDUER M.T.A. THREAD 10-kg/cm ²				
SIZE	MM	BAG	CARTOON	RATE
3/4"x1/2"	25x20	40x6	240	7
1"x1/2"	32x20	27x6	162	9
1"x3/4"	32x25	25x6	150	11



REDUER F.T.A. THREAD 10-kg/cm ²				
SIZE	MM	BAG	CARTOON	RATE
3/4"x1/2"	25x20	35x6	210	8
1"x1/2"	32x20	24x6	144	11
1"x3/4"	32x25	22x6	132	12



REDUCER M.T.A. THREAD 6-kg/cm ²				
SIZE	MM	BAG	CARTOON	RATE
1.1/2"x1.1/4"	50x40	20x6	120	26
2.1/2"x2"	75x63	-	72	53
3"x2"	90x63	-	45	73
3"x2.1/2"	90x75	-	45	75
4"x2"	110x63	-	24	110
4"x2.1/2"	110x75	-	24	112
4"x3"	110x90	-	20	117
6"x5"	160x140	-	-	-



REDUCER F.T.A. THREAD 6-kg/cm ²				
SIZE	MM	BAG	CARTOON	RATE
1.1/2"x1.1/4"	50x40	25x4	100	27
2.1/2"x2"	75x63	-	72	56
3"x2"	90x63	-	45	76
3"x2.1/2"	90x75	-	45	80
4"x2"	110x63	-	22	115
4"x2.1/2"	110x75	-	21	118
4"x3"	110x90	-	20	128
6"x5"	160x140	-	-	-



LONG BEND 4-kg/cm ²				
SIZE		PACKING		RATE
INCH	MM	BAG	CARTOON	
1.1/4"	40	-	-	-
1.1/2"	50	-	-	-
2"	63	-	20	100
2.1/2"	75	-	15	150
3"	90	-	10	245
4"	110	-	7	405
5"	140	-	4	830
6"	160	-	3	1250



LONG BEND 6-kg/cm ²				
SIZE		PACKING		RATE
INCH	MM	BAG	CARTOON	
1.1/4"	40	-	60	54
1.1/2"	50	-	40	63
2"	63	-	20	133
2.1/2"	75	-	15	210
3"	90	-	10	350
4"	110	-	7	565
5"	140	-	4	1190
6"	160	-	3	1730



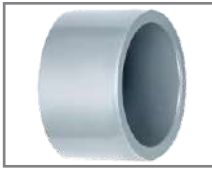
FABRICATED COUPLER 4-kg/cm ²				
SIZE		PACKING		RATE
INCH	MM	BAG	CARTOON	
2"	63	-	40	30
2.1/2"	75	-	30	38
3"	90	-	40	64
4"	110	-	23	100
5"	140	-	12	210
6"	160	-	9	340



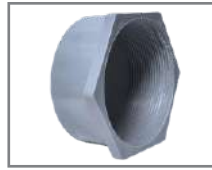
FABRICATED COUPLER 6-kg/cm ²				
SIZE		PACKING		RATE
INCH	MM	BAG	CARTOON	
2"	63	-	40	40
2.1/2"	75	-	30	55
3"	90	-	40	95
4"	110	-	23	145
5"	140	-	12	300
6"	160	-	9	450

AGRICULTURE - PVC

Sel-Fit Pipes & Fittings Pipe IS : 4985 & Fittings IS : 7834



END CAP 10-kg/cm ²				
SIZE	MM	BAG	CARTOON	RATE
1/2"	20	80x8	640	4
3/4"	25	50x8	400	5
1"	32	35x8	280	6



THREAD END CAP 10-kg/cm ²				
SIZE	MM	BAG	CARTOON	RATE
1/2"	20	55x8	440	6
3/4"	25	40x8	320	7
1"	32	30x8	240	8



END CAP (COLLAR) 6-kg/cm ²				
SIZE	MM	BAG	CARTOON	RATE
1.1/4"	40	40x4	160	9
1.1/2"	50	23x4	92	13
2"	63	25x4	100	19
2.1/2"	75	22x3	66	28
3"	90	-	45	42
4"	110	-	60	60
5"	140	-	32	107
6"	160	-	24	150



THREAD END CAP 6-kg/cm ²				
SIZE	MM	BAG	CARTOON	RATE
1.1/4"	40	22x8	176	13
1.1/2"	50	16x6	96	18
2"	63	18x4	72	23
2.1/2"	75	-	48	46
3"	90	-	30	54
4"	110	-	35	80
5"	140	-	24	161
6"	160	-	34	185



REPAIR COUPLER 4-kg/cm ²				
SIZE		PACKING		RATE
INCH	MM	BAG	CARTOON	
2"	63	-	15	155
2.1/2"	75	-	12	210
3"	90	-	13	300
4"	110	-	12	450
5"	140	-	7	780
6"	160	-	5	1160



BACK FLOW VALVE				
SIZE		PACKING		RATE
INCH	MM	BAG	CARTOON	
2"	63	-	64	70
2.1/2"	75	-	35	80
3"	90	-	45	94
4"	110	-	24	112
5"	140	-	32	180
6"	160	-	28	248



SERVICE SADDLE PLAIN				
SIZE		PACKING		RATE
INCH	MM	BAG	CARTOON	
1.1/2"x1/2"	50x1/2"	-	84	65
1.1/2"x3/4"	50x3/4"	-	84	65
1.1/2"x1"	50x1"	-	84	65
2"x1/2"	63x1/2"	-	54	82
2"x3/4"	63x3/4"	-	54	82
2"x1"	63x1"	-	54	82
2.1/2"x1/2"	75x1/2"	-	42	84
2.1/2"x3/4"	75x3/4"	-	42	84
2.1/2"x1"	75x1"	-	42	84
3"x1/2"	90x1/2"	-	36	100
3"x3/4"	90x3/4"	-	36	100
3"x1"	90x1"	-	36	100
4"x1/2"	110x1/2"	-	30	137
4"x3/4"	110x3/4"	-	30	137
4"x1"	110x1"	-	30	137
5"x1/2"	140x1/2"	-	22	176
5"x3/4"	140x3/4"	-	22	176
5"x1"	140x1"	-	22	176
6"x1/2"	160x1/2"	-	17	190
6"x3/4"	160x3/4"	-	17	190
6"x1"	160x1"	-	17	190



BRASS SERVICE SADDLE				
SIZE		PACKING		RATE
INCH	MM	BAG	CARTOON	
1.1/2"x1/2"	50x1/2"	-	84	106
1.1/2"x3/4"	50x3/4"	-	84	125
1.1/2"x1"	50x1"	-	84	148
2"x1/2"	63x1/2"	-	54	130
2"x3/4"	63x3/4"	-	54	149
2"x1"	63x1"	-	54	168
2.1/2"x1/2"	75x1/2"	-	42	130
2.1/2"x3/4"	75x3/4"	-	42	152
2.1/2"x1"	75x1"	-	42	172
3"x1/2"	90x1/2"	-	36	151
3"x3/4"	90x3/4"	-	36	168
3"x1"	90x1"	-	36	187
4"x1/2"	110x1/2"	-	30	196
4"x3/4"	110x3/4"	-	30	218
4"x1"	110x1"	-	30	224
5"x1/2"	140x1/2"	-	22	253
5"x3/4"	140x3/4"	-	22	270
5"x1"	140x1"	-	22	290
6"x1/2"	160x1/2"	-	17	270
6"x3/4"	160x3/4"	-	17	288
6"x1"	160x1"	-	17	316



NAHNI TRAP SOLID				
SIZE	MM	BAG	CARTOON	RATE
4"x2"	110x63	-	65	105
4"x2.1/2"	110x75	-	55	117
4"x3"	110x90	-	45	138
4"x4"	110x110	-	40	155



VENT COWL				
SIZE	MM	BAG	CARTOON	RATE
2"	63	-	72	15
2.1/2"	75	-	120	22
3"	90	-	63	28
4"	110	-	120	40

AGRICULTURE - PVC

Sel-Fit Pipes & Fittings Pipe IS : 4985 & Fittings IS : 7834



REDUCER TEE 10-kg/cm ²				
SIZE		PACKING		RATE
INCH	MM	BAG	CARTOON	
3/4"x1/2"	25x20	18x6	108	13
1"x1/2"	32x20	17x4	68	19
1"x3/4"	32x25	17x4	68	20



MULTI FLOOR TRAP (5" INCH)				
SIZE	MM	BAG	CARTOON	RATE
4"x2.1/2"	110x75	-	40	190
4"x3"	110x90	-	36	197



REDUCER TEE 6-kg/cm ²				
SIZE		PACKING		RATE
INCH	MM	BAG	CARTOON	
1.1/4"x3/4"	40x25	20x4	80	29
1.1/4"x1"	40x32	20x4	80	30
1.1/2"x3/4"	50x25	11x4	44	47
1.1/2"x1"	50x32	11x4	44	48
1.1/2"x1.1/4"	50x40	10x4	40	49
2"x1"	63x32	9x3	27	69
2"x1.1/4"	63x40	8x3	24	70
2"x1.1/2"	63x50	8x3	24	73
2.1/2"x1.1/2"	75x50	-	40	94
2.1/2"x2"	75x63	-	40	96
3"x2"	90x63	-	25	156
3"x2.1/2"	90x75	-	24	157
4"x2"	110x63	-	34	248
4"x2.1/2"	110x75	-	32	255
4"x3"	110x90	-	32	266
5"x2.1/2"	140x75	-	-	536
5"x3"	140x90	-	17	552
5"x4"	140x110	-	15	568
6"x2.1/2"	160x75	-	11	776
6"x3"	160x90	-	11	792
6"x4"	160x110	-	11	808
6"x4"	160x140	-	11	824



MULTI FLOOR TRAP (7" INCH)				
SIZE	MM	BAG	CARTOON	RATE
4"x2.1/2"	110x75	-	30	228
4"x3"	110x90	-	28	243



P - TRAP				
SIZE	MM	BAG	CARTOON	RATE
4"x4"	110x110	-	19	285
5"x4"	125x110	-	20	300



Q - TRAP				
SIZE	MM	BAG	CARTOON	RATE
5"x4"	110x110	-	17	316
5"x4"	125x110	-	17	334



S - TRAP				
SIZE	MM	BAG	CARTOON	RATE
4"x4"	110x110	-	15	364
5"x4"	125x110	-	15	384



MALE SET 6-kg/cm ²				
SIZE		PACKING		RATE
INCH	MM	BAG	CARTOON	
2.1/2"	75	-	36	117
3"	90	-	27	154
4"	110	-	36	251
5"	140	-	-	-
6"	160	-	-	-



THREAD ELBOW 16-kg/cm ² (PN-16)				
SIZE		PACKING		RATE
INCH	MM	BAG	CARTOON	
1/2"	20x1/2"	22x8	176	15
3/4"	25x3/4"	18x6	108	22
1"	32x1"	15x4	60	35
3/4"x1/2"	25x1/2"	15x8	120	19
1"x1/2"	32x1/2"	10x8	80	27



THREAD TEE 16-kg/cm ² (PN-16)				
SIZE		PACKING		RATE
INCH	MM	BAG	CARTOON	
1/2"	20x1/2"	15x8	120	19
3/4"	25x3/4"	12x6	72	30
1"	32x1"	6x6	36	47
3/4"x1/2"	25x1/2"	10x8	80	26
1"x1/2"	32x1/2"	6x8	48	36



PVC BALL VALVE PLAIN & THREAD				
SIZE	MM	BAG	CARTOON	RATE
1/2"	20	20x6	120	48
3/4"	25	12x6	72	63
1"	32	9x6	54	79
1.1/4"	40	6x6	36	133
1.1/2"	50	4x6	24	160
2"	63	2x6	12	235
2.1/2"	75	-	16	390
3"	90	-	9	550
4"	110	-	6	950
5"	140	-	4	2900
6"	160	-	2	3310
7"	180	-	-	-



UNION 16-kg/cm ²				
INCH	MM	BAG	CARTOON	RATE
1/2"	20	25x4	100	32
3/4"	25	17x4	68	37
1"	32	10x4	40	58
1.1/4"	40	8x4	32	76
1.1/2"	50	11x4	44	118
2"	63	8x3	24	160



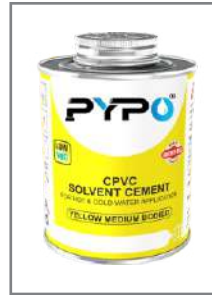
MULTI FLOOR TRAP (4" INCH)				
SIZE	MM	BAG	CARTOON	RATE
4"x2.1/2"	110x75	-	50	159



PVC APEX BALL VALVE				
INCH	MM	BAG	CARTOON	RATE
1/2"	20	24x6	144	58
3/4"	25	14x6	84	70
1"	32	10x6	60	95
1.1/4"	40	6x6	36	155
1.1/2"	50	4x6	24	185
2"	63	2x6	12	330



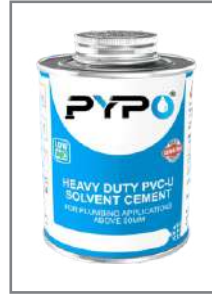
cPVC NAIL CLAMP				
SIZE		PACKING		RATE
INCH	MM	BAG	CARTOON	
1/2"	15	100x25	2500	2.1
3/4"	20	100x15	1500	2.5
1"	25	100x9	900	4.2
1.1/4"	32	50x10	500	5.5
1.1/2"	40	25x12	300	7.5
2"	50	25x10	250	12.4



cPVC SOLVENT CEMENT				
ML	BOX	CARTOON	RATE	RETAIL MRP
10 ML Tube	50x4	200	17.8	45
25 ML Tube	30x4	120	30.5	75
59 ML Tin	15x8	120	67.5	155
118 ML Tin	15x6	90	113	220
237 ML Tin	12x4	48	198	355
473 ML Tin	-	12	390	495



uPVC NAIL CLAMP				
SIZE		PACKING		RATE
INCH	MM	BAG	CARTOON	
1/2"	15	100x14	1400	2.5
3/4"	20	100x8	800	4.1
1"	25	100x6	600	5.3
1.1/4"	32	50x8	400	7.3
1.1/2"	40	25x12	300	8.9
2"	50	25x8	200	12.9



uPVC SOLVENT CEMENT				
ML	BOX	CARTOON	RATE	RETAIL MRP
10 ML Tube	50x4	200	14.5	35
25 ML Tube	30x4	120	26.5	55
59 ML Tin	15x8	120	56.5	110
118 ML Tin	15x6	90	95.5	160
237 ML Tin	12x4	48	166	265
473 ML Tin	-	12	346	450



PVC NAIL CLAMP				
SIZE	MM	BAG	CARTOON	RATE
2"	63	35	140	8.9
2.1/2"	75	40	80	13.4
3"	90	-	65	18.8
4"	110	-	50	22.8



PVC SOLVENT CEMENT				
ML	BOX	CARTOON	RATE	RETAIL MRP
50 ML Tube	28x3	84	37.5	60
100 ML Tin	15x6	90	72.5	110
250 ML Tin	12x4	48	124	180
500 ML Tin	-	12	228	300



CONCEALED VALVE SET		
PACKING		RATE
ITEM	CARTOON	
TRIANGLE	AS PER ORDER	530
FUSION	AS PER ORDER	530
FLT	AS PER ORDER	530
ORNAMIX	AS PER ORDER	530



TEFLON TAPE		
PACKING		RATE
ITEM	CARTOON	
TEFLON TAPE (WHITE) 12 MM x 10 MTR.	1000	14
TEFLON TAPE (YELLOW) 12 MM x 10 MTR.	1000	15



SPINDLE	
ITEM	RATE
28x1.1/2" BRASS SPINDLE	280



SPINDLE	
ITEM	RATE
15 MM P.T.M.T. SPINDLE	60
20 MM P.T.M.T. SPINDLE	80

Product Features



HIGH STRENGTH & DURABILITY



SS INSERT FOR HIGH STRENGTH



RESIDENTIAL PURPOSES



WATER SAVING TECHNOLOGY



IDEAL FOR DRINKING WATER



FOOD GRADE & HYGIENIC



RUST FREE



SCRATCH RESISTANT



LONG LIFE DURABILITY



SAFE AGAINST THEFT



P.T.M.T.

Taps with Flange Polytetra Methylene Teraphthalate

ARIA COLLETION

15 MM P.T.M.T. TAPS with Flange
Polytetra Methylene Teraphthalate



Advance
Technology



Skilled
Manpower



Excellent
Quality Standard



Unmatched
Designs



Integrity



Unbelievable
Customer Service

ANGLE COCK



QTY : 96 | MRP : 188

BIB COCK



QTY : 72 | MRP : 192

LONG COCK



QTY : 48 | MRP : 218

PILLAR COCK



QTY : 48 | MRP : 238

SINK COCK



QTY : 20 | MRP : 465

SWAN COCK



QTY : 20 | MRP : 465

2 IN 1 BIB COCK



QTY : 16 | MRP : 432

2 WAY ANGLE COCK



QTY : 32 | MRP : 415

FUSION COLLETION

15 MM P.T.M.T. TAPS with Flange
Polytetra Methylene Teraphthalate



Advance
Technology



Skilled
Manpower



Excellent
Quality Standard



Unmatched
Designs

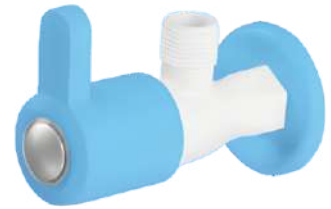


Integrity



Unbelievable
Customer Service

ANGLE COCK



QTY : 96 | MRP : 188

BIB COCK



QTY : 72 | MRP : 192

LONG COCK



QTY : 48 | MRP : 218

PILLAR COCK



QTY : 48 | MRP : 238

SINK COCK



QTY : 20 | MRP : 465

SWAN COCK



QTY : 20 | MRP : 465

2 IN 1 BIB COCK



QTY : 16 | MRP : 432

2 WAY ANGLE COCK



QTY : 32 | MRP : 415

WALL MIXER



QTY : 8 | MRP : 2045

CRYSTAL COLLETION

15 MM P.T.M.T. TAPS with Flange
Polytetra Methylene Teraphthalate



Advance
Technology



Skilled
Manpower



Excellent
Quality Standard



Unmatched
Designs



Integrity



Unbelievable
Customer Service

ANGLE COCK



QTY : 96 | MRP : 240

BIB COCK



QTY : 72 | MRP : 240

LONG COCK



QTY : 48 | MRP : 275

PILLAR COCK



QTY : 48 | MRP : 380

SINK COCK



QTY : 20 | MRP : 565

SWAN COCK



QTY : 20 | MRP : 565

2 IN 1 BIB COCK



QTY : 16 | MRP : 430

2 WAY ANGLE COCK



QTY : 32 | MRP : 430

WASHING BIB COCK



QTY : 32 | MRP : 310

ANGLE COLLETION

20 MM P.T.M.T. TAPS with Flange
Polytetra Methylene Teraphthalate



Advance Technology



Skilled Manpower



Excellent Quality Standard



Unmatched Designs

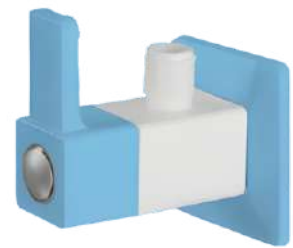


Integrity



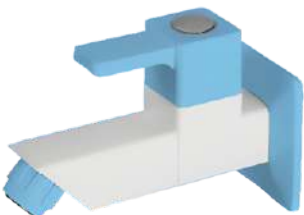
Unbelievable Customer Service

ANGLE COCK



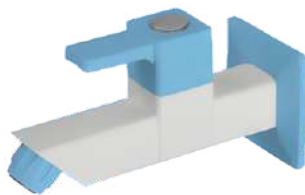
QTY : 96 | MRP : 313

BIB COCK



QTY : 48 | MRP : 332

LONG COCK



QTY : 48 | MRP : 380

PILLAR COCK



QTY : 20 | MRP : 429

SINK COCK



QTY : 20 | MRP : 692

SWAN COCK



QTY : 20 | MRP : 711

2 IN 1 BIB COCK



QTY : 16 | MRP : 692

2 WAY ANGLE COCK



QTY : 32 | MRP : 658

WALL MIXER



QTY : 8 | MRP : 2304

ROYAL COLLETION

20 MM P.T.M.T. TAPS with Flange
Polytetra Methylene Teraphthalate



Advance Technology



Skilled Manpower



Excellent Quality Standard



Unmatched Designs



Integrity



Unbelievable Customer Service

ANGLE COCK



QTY : 96 | MRP : 331

BIB COCK



QTY : 48 | MRP : 396

LONG COCK



QTY : 48 | MRP : 447

PILLAR COCK



QTY : 20 | MRP : 480

SINK COCK



QTY : 20 | MRP : 726

SWAN COCK



QTY : 20 | MRP : 728

2 IN 1 BIB COCK



QTY : 16 | MRP : 730



5 TON

**WEATHER PROOF | HIGH LIFE SPAN | SAFE & ANTI SLIPPER SURFACE
EASY HANDLING | FREE FROM THEFT | ABRASION RESISTANCE**

FRP MANHOLE COVER - 5 TON

SIZE	WEIGHT	CARTOON QTY	RATE
10x10	2.200	12	500
12x12	3.700	6	600
12x18	4.800	6	900
15x15	4.900	6	760
18x18	7.600	4	1170
15x24	10.800	3	1550
18x36	19.000	2	3810
21x21	10.700	3	1580
24x24	14.700	2	1850
24x30	18.100	1	3690
24x36	27.000	2	5560
28x28	25.200	2	3580
30x30	31.200	1	4200
36x36	48.000	1	8090

TERMS & CONDITIONS

- ▶ Prices are ex-factory
- ▶ GST applicable at actuals
- ▶ Freight is extra as actual kindly check the discount structure before placing orders every time.
- ▶ No responsibility for any breakage, damage or loss in transit.
- ▶ Company holds the right to revise the prices prior any information.
- ▶ Goods one sold are not taken back unless there is any quality issue.
- ▶ All disputes are subjected to the jurisdiction of factory location only.

**NOTE : Warranty is Applicable for Using
PYPO Pipes with PYPO Fittings & PYPO Solvent.**



+91 84601 32904



info.fluxpolyplast@gmail.com



Rs No. 67 & 68, Plot No. 80, Sub No. 80/2,
Sidhi Vinayak Ind. Zone, At-Virva, Ta-Lodhika,
Dist.- Rajkot, 360311.



MAKE IN INDIA



स्वच्छ भारत
एक कदम स्वच्छता की ओर